

2007 Annual Report

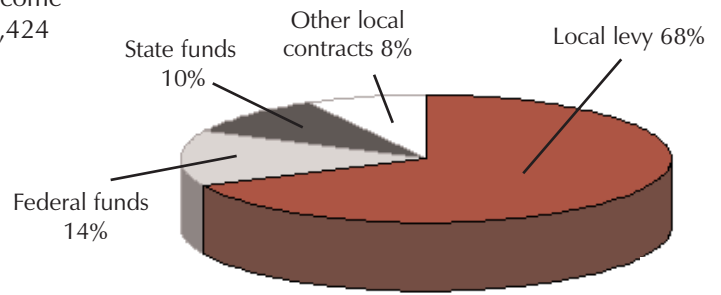
Number of People Served

1,281 Total people served (unduplicated)

- 262 Infants and toddlers who received early intervention services at the E.S. Weiant and Ann Davino centers
- 144 Preschool-age children who received early childhood education services at the E.S. Weiant Center
- 484 School-age children who received service coordination (case management)
- 474 Adults who received service coordination
- 296 Families who received support services such as respite care and adaptive equipment
- 248 Adults who received services at the LICCO Inc. sheltered workshop and from private adult services providers
- 159 Adults who were employed in the community with ongoing support, and those working at subcontracted sites.
- 204 Adults and children who received residential services
(Some individuals received multiple services)

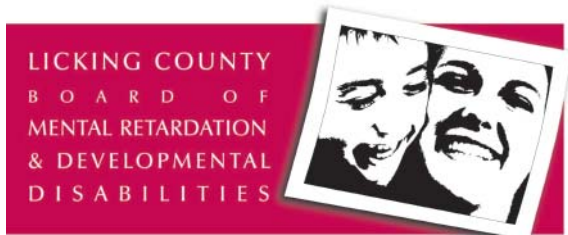
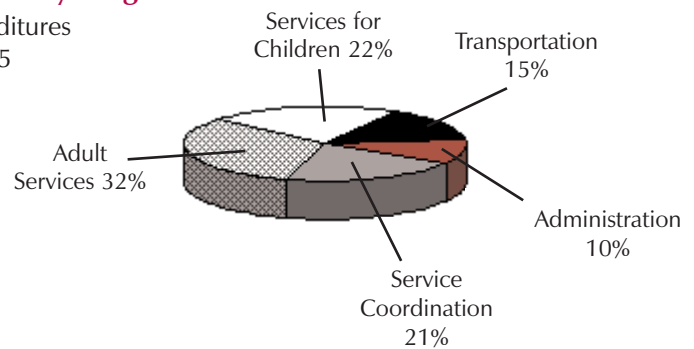
Income by Source

Total income
\$9,878,424



Expenditures by Program

Total expenditures
\$10,035,205



Picture the Possibilities

LICCO Inc.
600 Industrial Parkway
Heath OH 43056

Non-Profit Org.
U.S. Postage
Paid
Permit No. 602
Newark OH
43055

The Licking County Board of MRDD is helping children and adults pursue their dreams, and building a community of caring people who see the possibilities in people with disabilities.

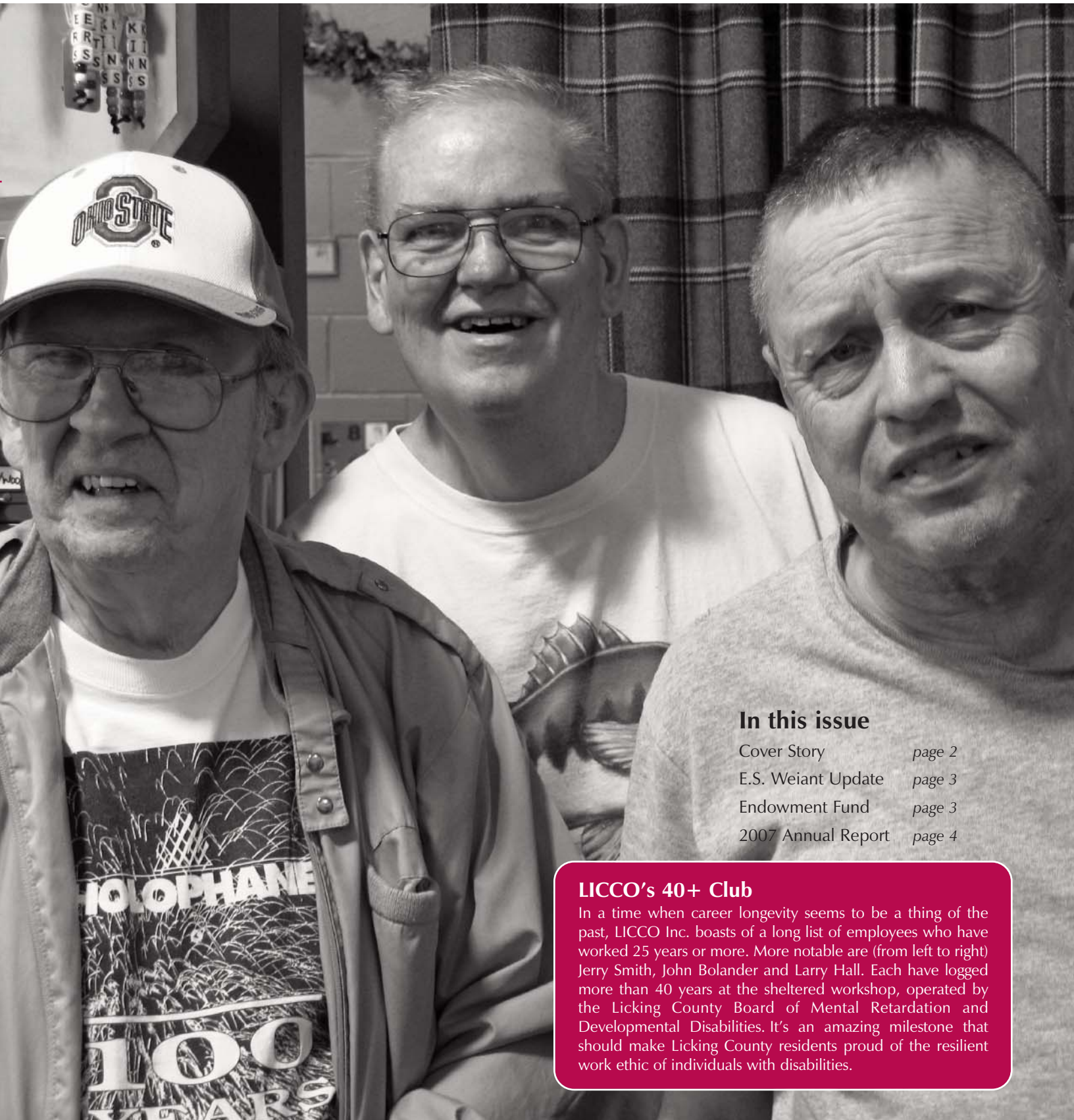
Possibilities

Seeing the
possibilities in people
with disabilities



A Publication of the Licking County Board of Mental Retardation and Developmental Disabilities

Spring 2008



In this issue

Cover Story	page 2
E.S. Weiant Update	page 3
Endowment Fund	page 3
2007 Annual Report	page 4

LICCO's 40+ Club

In a time when career longevity seems to be a thing of the past, LICCO Inc. boasts of a long list of employees who have worked 25 years or more. More notable are (from left to right) Jerry Smith, John Bolander and Larry Hall. Each have logged more than 40 years at the sheltered workshop, operated by the Licking County Board of Mental Retardation and Developmental Disabilities. It's an amazing milestone that should make Licking County residents proud of the resilient work ethic of individuals with disabilities.

40 years and counting...

Career longevity often eludes us, even though it's something for which many strive -- finding a job we enjoy that pays a fair wage, and sticking with it until we retire. For a variety of reasons -- lack of job satisfaction and layoffs, for example -- many of us don't seem to stay in one place for very long.

But for a large number of people at LICCO Inc., located in Heath and operated by the Licking County Board of Mental Retardation and Developmental Disabilities, career longevity is commonplace. Nearly 10 percent of LICCO's 233 employees have worked there for 25 years or more.

In particular, there are three gentlemen who deserve special recognition for achieving a milestone for which many in the modern working world would be envious. John Bolander, Jerry Smith and Larry Hall each have worked at LICCO for more than 40 years.

"Where does the time go?" asks Doug Price, a LICCO staff member.

Price speaks fondly of Bolander, who started working at LICCO in 1967, immediately after graduating from the former Starlight School (now the E.S. Weiant Center, which then served chil-

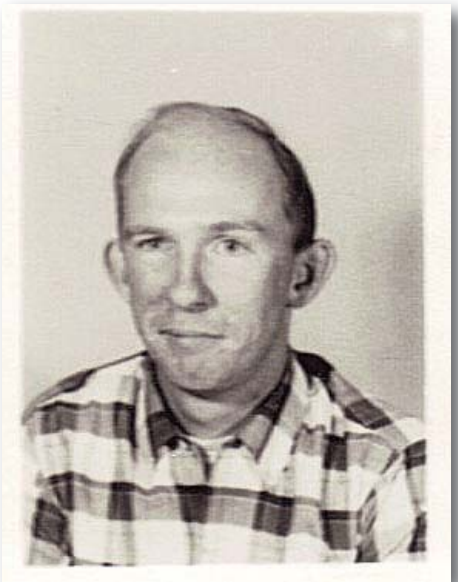


Larry Hall in a 1967-68 workshop photo from the LCBMRDD archives

dren with MRDD through the completion of high school).

"If you ask John about his lengthy employment at LICCO, he just smiles," Price says. "He is very proud of his work history here. He may not tell you where the last 40 years have gone, but he knows it is a long time."

Bolander has worked on a variety of contracts throughout the years. These contracts are a result of the relationship LICCO has built with business and industry throughout Licking County.



Jerry Smith has worked at LICCO since 1967, the year this photo was taken

His favorite job is assembling brake parts for a local auto supplier.

"Through all the years, John remains a very loyal and friendly employee," Price says.

Aside from Bolander's job at LICCO, he enjoys bowling, golfing, fishing, driving his lawn tractor, and recreational events sponsored by the Center for Disability Services.

He also likes spending time with his family. Bolander lives in Heath with niece Cheri Caudell, and is very close with his brother and sister-in-law, Bill and Bonnie Diehl, also of Heath.

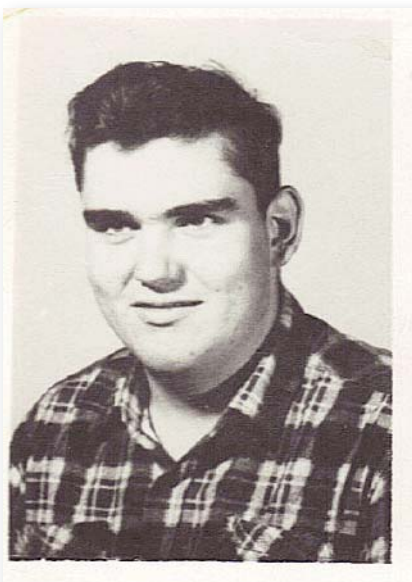
Like Bolander, Jerry Smith started his LICCO career in 1967, after graduating from Starlight. He has worked on numerous projects and recalls working in the former LICCO pallet shop on Steel Avenue in Newark.

"It was good work," Smith says.

Today, he is known at LICCO and the LCBMRDD for his sense of humor and tremendous personality. His favorite pastimes are watching television game shows and NASCAR.

"I like Dale Earnhardt Jr.," he says.

Smith often participates in activities at the Licking County Aging Program's Zerger Hall, and is an accomplished artist. In 2007, he earned third place in the emerging artist category of Accessible Expressions, a touring exhibition for people with disabilities, sponsored by VSA Arts of Ohio.



John Bolander (in this 1964-65 school photo), just a few short years before starting his career at LICCO



Larry Hall operates a rug loom in this Jan. 20, 1978 photo from The Newark Advocate (used by permission).



When asked if he plans to retire any-time soon, Smith's answer is emphatic: "Are you kidding? No!"

Smith lives in Newark with his sister and brother-in-law, Susan and Daryl Kerns.

Larry Hall is the longest-working employee on the LICCO payroll. He began his career in 1965. Throughout the years, Hall says he has done "a little bit of everything" at the workshop -- he has built pallets, loomed rugs, assembled factory parts and, now, is often found in LICCO's Spirit Line jewelry department, under the direction of Workshop Specialist Vicki Wilkey.

"For years Larry worked standing up all day. He was the fastest labeler in the workshop," Wilkey says. "Larry is very organized and takes the initiative to keep his work area clean. He is the kind of guy who would go the extra mile if someone needs something. He really enjoys pleasing others."

Hall likes listening and singing along to country music, and once had a pen-chant for gardening.

"Larry was famous for growing very tall pole beans," Wilkey says.

Hall lives in Newark, in a supported residential home with two roommates who also work at LICCO. He still enjoys his job, even after all these years, and has no immediate plans to retire.



Typically-developing children and those with disabilities bring rays of sunshine into each other's lives.

Weiant preschool enrollment underway

The E.S. Weiant (formerly Starlight) Center, operated by the Licking County Board of MRDD, encourages parents of typically-developing children, ages 3 to 5, to enroll their young ones now in next year's preschool program.

"Typically-developing kids gain strong leadership skills while accepting and appreciating others who may be differ-

ent than they are," says Molly Kurtz, the LCBMRDD's director of education.

Research shows that children with disabilities who attend inclusive preschools often demonstrate higher levels of social play and are more likely to initiate interactions with others. They also make more progress in language and cognitive motor skills."

No more than 12 children are placed in each classroom, putting the teacher to student ratio at 1:4. Six to eight of the children in each classroom may have disabilities or delays in development. Teachers and assistants plan daily activities to meet each child's individual needs. Teachers develop lesson plans in accordance with the Ohio Department of Education (ODE) Early Learning Content Standards for kindergarten readiness. All teachers hold college or graduate degrees and are ODE certified in early childhood education.

Each child attends preschool for four half-day sessions each week. The cost per child, per week is \$40. Transportation is available in some areas for a nominal fee. The E.S. Weiant (formerly Starlight) Center is located at 116 N. 22nd St. in west Newark. To register your child, please call (740) 344-6921.

LCBMRDD Endowment Fund

The late Martha Welsh left a legacy not only to her granddaughters, but to the many citizens of Licking County who have special needs.

In 2005, the Licking County Board of MRDD received a \$25,000 bequest from Mrs. Welsh's estate in honor of her granddaughters, Tammy and Lori Dumbauld, who receive services from the LCBMRDD. After considering options for this bequest, the Board chose to establish the LCBMRDD Endowment Fund through the Licking County Foundation.

The fund exists to provide grants in support of individuals or families who are served by the LCBMRDD. Disbursements will be made annually after contributions have reached \$150,000. The LCBMRDD and Mrs. Welsh's family hope more people will follow her example by adding to this fund, therefore assisting more people with special needs. Please consider this endowment when making future charitable donations. It is a special gift that will continue to benefit the community well into the future. There are a variety of ways to give:

- * Donations -- Outright donations are welcome in any amount, at any time.
- * Bequests -- Contributions can be made through your Last Will and Testament.
- * Memorials -- You can make memorial gifts (in any amount) to the LCBMRDD Endowment Fund on the occasion of the death of a loved one.
- * Life Insurance -- Life insurance can be used to make gifts to the endowment fund, either as a beneficiary or a separate policy.

All donations are tax deductible. Please be advised that those who wish to give through a bequest or life insurance should first seek advice from a qualified professional. For more information about the LCBMRDD Endowment Fund, please contact the Licking County Foundation at (740) 349-3863.



Martha Welsh

In addition to Bolander, Smith and Hall, the following individuals have worked at LICCO for 25+ years:

- Donald Allen**
- Sharon Auck**
- Nellie Bibler**
- Chad Colvin**
- Richard Fairall**
- John Geho**
- Cynthia Hoskinson**
- Carolyn McIntyre**
- Randy Migliozi**
- Betty Miller**
- Jeffrey Miller**
- Mike Price**
- Thomas Sachs**
- Gary Saltzman**
- Jim Stevens**
- Diana Trout**
- Tom Vogelmeier**
- Bertha White**
- Thomas Zimmerman**